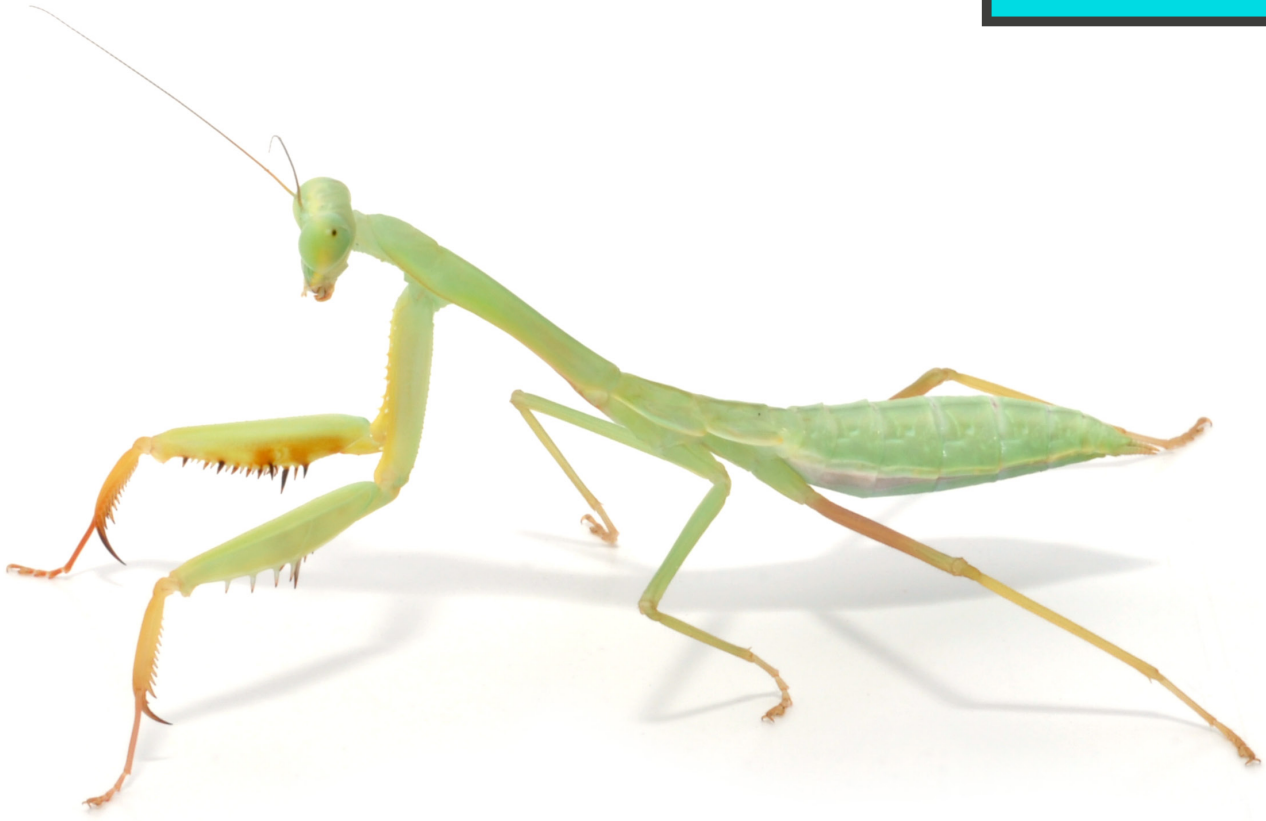


Praying Mantis



OVERVIEW



- Scientific Name: *Mantodea*
- Origin: Worldwide
- Ease of Care: Beginner
- Potential Adult Size: Up to 6 Inches (varies depending on specific species)
- Life Span: Average 1 year (varies depending on specific species)
- Behaviour: Diurnal
- Diet: Insectivore
- Handling: Beginner
- Humidity: 60-90%

TOP TIPS

- ✓ This species drinks moisture droplets from foliage, so the Glass Terrarium must be lightly misted with a spray bottle.

EQUIPMENT NEEDED



- Housing: Glass Terrarium
- Heating: Not always needed (Heat Mat can be used if maintaining temperatures are an issue)
- Lighting: Arcadia Pro T5 UVB Kit ShadeDweller 2.4%
- Substrate: HabiStat Spider Bedding
- Water: Use a spray bottle to maintain required humidity levels

HOUSING

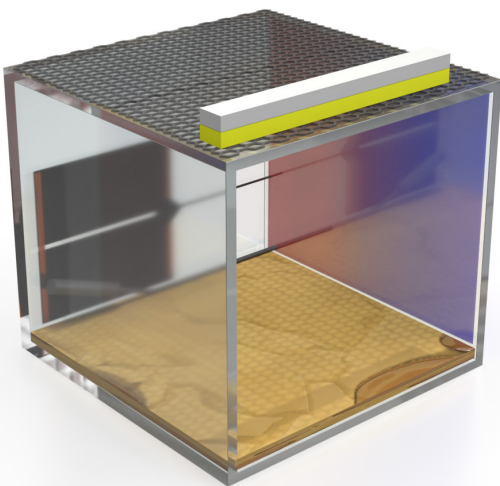


We recommend using a HabiStat Glass Terrarium 20x20x30cm (HGT2030) or the larger HabiStat Glass Terrarium 30x30x45cm (HGT3045), depending on the size of the species.

ENVIRONMENT



Terrestrial Terrarium Setup



Heating

Praying Mantises are a diurnal species and require a suitable light and heat gradient in their Glass Terrarium.

- Background Temp: 22°C -25°C (72°F-78°F)
- HOT Spot: Not Needed
- Night-Time Temp: 22°C (72°F)

The species could be kept without an external heat source should the room temperature remain within the suggested range. If this is not achievable, use a HabiStat Heat Mat on an outside wall of the Glass Terrarium running in conjunction with a HabiStat Mat Stat (HTMW1). This can be on 24/7, or just used overnight if there is a chance the required temperatures could drop below the recommended

range.

Mat thermostats are designed to regulate temperatures using a thermostat probe (also known as a sensor). Correct placement of the probe is critical to avoid overheating and injury to the Praying Mantis.

Check temperatures regularly, using a reliable dual thermometer and hygrometer to ensure that there are no extreme fluctuations.

Lighting

Use an Arcadia Pro T5 UVB Kit ShadeDweller Arboreal 2.4% (RARTP8SA) on top of the mesh of the Glass Terrarium.

The Arcadia JungleDawn LED Bar (RAJDP1) will aid plant growth, as well as overall Glass Terrarium illumination and day/night cycle.

Ensure that lighting is fitted correctly and within the manufacturers recommended distances.

Substrate and Decoration

Personal choice will dictate how you decorate your Glass Terrarium, but we recommend the following as examples:

- HabiStat Spider Bedding (HSS10)
- Wood/branches/Cork bark for climbing on, hiding, and sleeping on/under.
- Live or artificial plant decoration.

DIET & WATER



Praying Mantises are an insect-eating species; they should be fed a varied range of insects during the daytime when it is most active.

The size of feeder will be determined by the size of the Praying Mantis. Small Mantis will eat Fruit Fly and Pinhead Crickets; larger Mantis will eat suitably sized Crickets, Roaches, Calci-Worm, and Locust.

Misting the Glass Terrarium foliage will help maintain the required humidity levels and provide hydration for the Praying Mantis.

SUPPLEMENTATION



Leaf Insects do not need any additional supplementation within their diet.

ADDITIONAL INFORMATION



- Most Praying Mantis species live in tropical/dry areas but are still found worldwide.
- Praying Mantis have a very flexible joint between the head and prothorax that enables them to swivel their heads 180°.

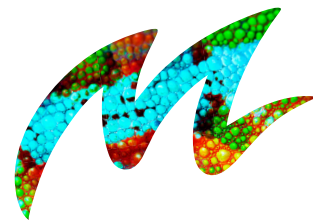
HEALTH & HYGIENE



We recommend the following cleaning routine to keep your Praying Mantis healthy and happy:

	Water	Substrate	Enclosure
Daily	Change old water for fresh water	Spot clean	Check vents on enclosure are not blocked and allow air to pass through freely
Weekly	Disinfect water bowl or dish	Agitate substrate to prevent any bacterial build up and to allow any dirty bedding to be removed	Wipe down glass and walls with a reptile safe disinfectant
Monthly		Take out old substrate and replace with new substrate	Wipe down inside the enclosure and disinfect décor with a reptile safe disinfectant

Always wash your hands, surfaces and equipment with warm water and disinfectant immediately before and after handling your Mantis, their food, Glass Terrarium, and any other equipment.



Monkfield Nutrition Ltd
Arthur Rickwood Farm
Chatteris Road, Mepal, Ely, CB6 2AZ

monkfieldreptile.com
Telephone: 01223 208261

MonkfieldReptile
Everything Reptile

